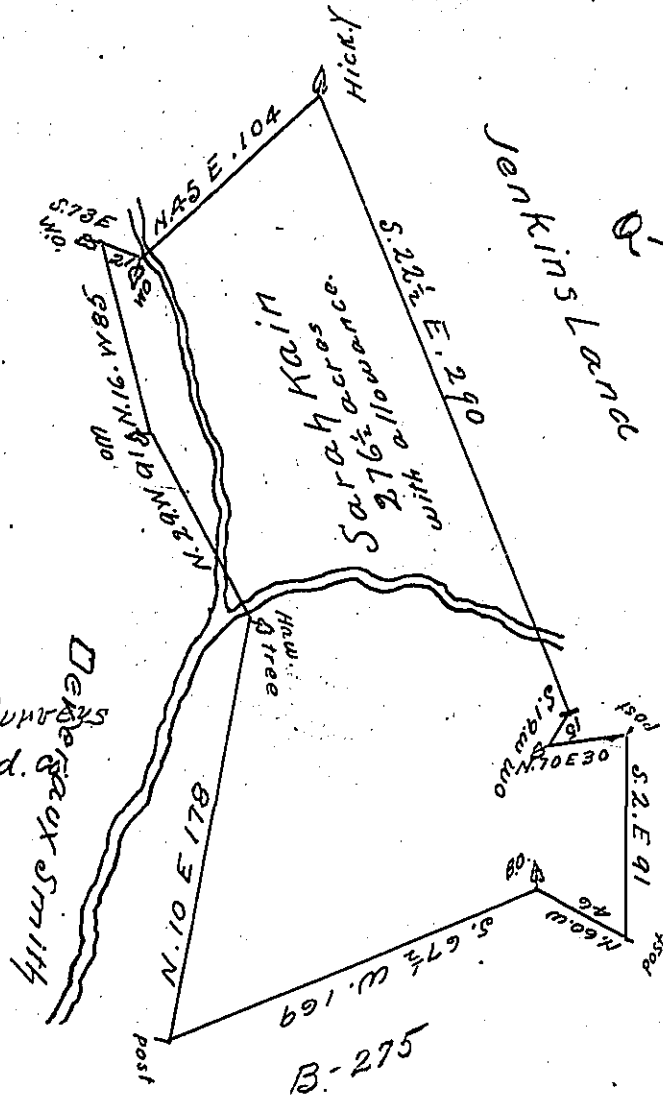


C134-42

(?)
Q-366

in D.R. Surveys
Westmoreland.



Jenkins Lanch

C87-101

B-275

In pursuance of a Warrant bearing date the 15th day of September 1784 surveyed on the — day of — following unto Sarah Kain the above Described Tract of Land situate on the Waters of Turtle Creek in Pitt Township Westmoreland County Containing Two Hundred & Seventy Six acres and half with allowance of Six p^{ts} Cent for Roads &c

Benj. Lodge D.S.

John Lukens Esq^r
Surveyor General.

IN TESTIMONY that the above is a copy of the original remaining on file in the Department of Internal Affairs of Pennsylvania, made conformably to an Act of Assembly approved the 16th day of February, 1833, I have hereunto set my Hand and caused the Seal of said Department to be affixed at Harrisburg, this twenty sixth day of May 1905

Loach R. Brown
Secretary of Internal Affairs.